



enertexbayern gmbh
simulation entwicklung consulting

Manual

Enertex® KNX Update V4

Notice

The contents of this document may be reproduced without prior written approval by Enertex® Bayern GmbH in any form, neither in whole nor in parts, copied, transmitted, distributed or stored.

Enertex® is a registered trademark of Enertex® Bayern GmbH. Other product and company names mentioned in this manual may be the marketing or trade names of their respective owners.

This manual may be changed without notification or announcement and makes no claim to completeness or accuracy.

Table of Contents

Notices.....	3
Requirements.....	3
Brief description.....	3
Usage.....	3
<i>Connect.....</i>	<i>3</i>
<i>Start scan.....</i>	<i>4</i>
<i>Start update.....</i>	<i>4</i>
Additional functions.....	5
<i>Slow update.....</i>	<i>5</i>
<i>ManualUpdate.....</i>	<i>5</i>
<i>Show device info.....</i>	<i>5</i>
<i>Device filter.....</i>	<i>6</i>
Support.....	6
Downloads.....	6
Changelog.....	7

Notices

- It is possible that the device will be reset to factory settings during the update process and must be reprogrammed. The ETS and the associated project are required for this.
- No installation is required to run the program.
- It is possible that older products for which firmware updates are no longer planned are currently not supported. If you need to update the firmware of these devices please use the [Enertex® KNX Update V3](#)

Requirements

- PC with Windows 10
- .NET Windows Desktop Runtime - 5.0.17 (x64) (Installer is included)
- KNX interface (IP or USB)
- ETS with your project
- Internet connection or update file

Brief description

The Enertex® KNX Update V4 is a software to transmit the latest firmware updates to Enertex® devices. The program shows the available interfaces to the KNX bus or allows a manual configuration (e.g. via VPN). With the help of a line scan, available Enertex® devices on the bus are displayed and it is checked whether a firmware update is available. Then the firmware update can be performed for the selected devices.

Usage

To update the firmware of an Enertex® KNX device, proceed as follows:

1. Connect
2. Start scan
3. Start update

Connect

- **Select current interface**

To establish the connection to the KNX bus, an interface must be selected.

When the software starts, it automatically searches for available interfaces and makes a preselection. One of the interfaces found can be selected or an IP interface can be configured manually.

If the interface is configured manually (e.g. for remote access via VPN), the IP address of the interface must be specified. A specific tunnel (individual address) may only be specified if the interface supports tunneling v2.

The NAT option activates the network address translation of the transmission.

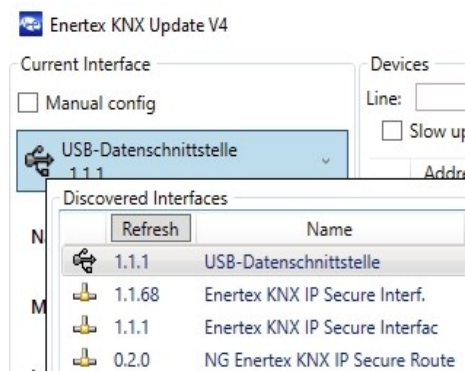


Figure 1: Button to select available interfaces

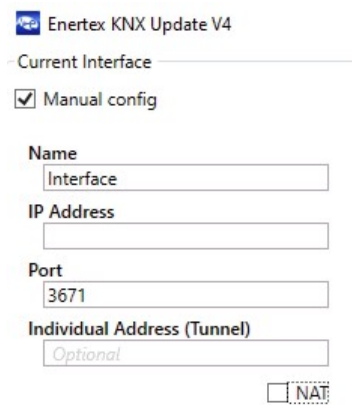


Figure 2: Mask to configure an interface manually

- **Secure settings**

If one of the devices is operated secure on the KNX bus or secure tunneling of the interface is activated, the keyring of the ETS project is required.

The keyring is loaded via the corresponding button in the Enertex® KNX Update. The password for the keyring is also requested.

- **Connect**

Establish the bus connection with the "Connect" button.

Start scan

The line and address range in which the devices are located can be limited. If a single device is to be tested at address X, enter a range from X - X.

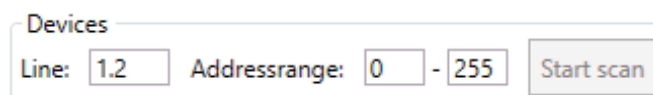


Figure 3: Example for line and address range

After a scan is completed, the devices found appear in a list with information about the firmware version. Several scans can be performed one after the other, e.g. to update the firmware of several devices of different lines.

Start update

Devices for which a new firmware version is available are marked by default and the update can be started.

Devices

Line: Addressrange: -

☐ Slow update

	Address	Manufacturer	Name	Device ver.	Latest FW	Status
Line 1.1						
<input type="checkbox"/>	1.1.57	Enertex Bayern GmbH	MeTa	1.046	1.046	latest
<input checked="" type="checkbox"/>	1.1.68	Enertex Bayern GmbH	KNXIPSecureInterface	1.054	2.000	outdated
<input checked="" type="checkbox"/>	1.1.74	Enertex Bayern GmbH	DimmerV2	1.027	1.032	outdated
Line 1.2						
<input type="checkbox"/>	1.2.1	Enertex Bayern GmbH	KNXTPSecureCoupler	2.001	2.001	latest
<input type="checkbox"/>	1.2.60	Enertex Bayern GmbH	LED-Dimmer	1.054	1.054	latest

☒ Show only Enertex devices

Devicescan aborted.

Figure 4: Result of a scan of several lines

Additional functions


Deviating from the standard use of the software, the functions described below can be useful in individual cases or in case of problems.

Slow update

The option "Slow update" limits the apdu lenght of all telegrams to 55.

ManualUpdate

With the button "Manual update" or via the context menu of the device list a window for manual update of a device shows up.

 **Manual update** ✕

Device address:

☐ Expert settings

APDU length:

Read/Write retries:

Figure 5: Manual update window

The individual address of the target device must be entered here. Optionally, the parameters for the telegram legth and the retries of the transmission of a telegram can be specified.

Then the firmware update file to be transferred to the device must be selected on the PC. This also allows an older firmware version to be transferred to the device.

Show device info

Via the context menu of the device list a window with additional device information like mask version, serial number and hardware type can be opened.

Device filter

The option "Show only Enertex devices" restricts the displayed devices to only show devices that respond to query of the device manufacturer "Enertex Bayern GmbH".

If a device is operated secure and no matching key was found in the keyring it will not be displayed if this option is enabled.

Support

If you have any questions about the software or if you face any issues please do not hesitate to contact us. Email: support@enertex.de

Downloads

You can find the latest version of the Enertex® KNX Update as well as the latest firmware update files for all our products at <https://enertex.de/e-downloads.html>.